

Tasks:

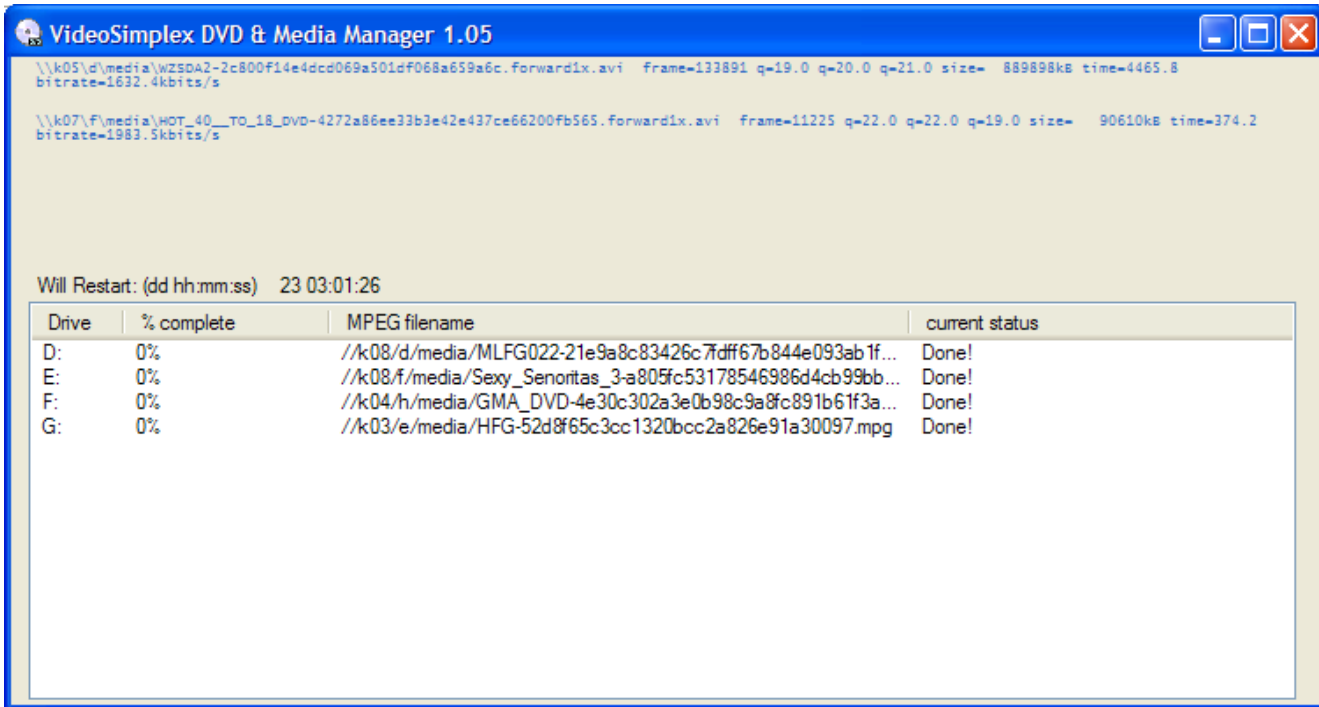
### Loading Movies

Assuming you are loading about 30 movies every week to keep the selection fresh in the booths and to keep your customers coming back for more:

#### STEP 1:

Start the DVDRIP program from the desktop (if not already running)

Start the CHANNELMANAGEMENT program from the desktop (if not already running)



Load all of the DVD drives with the new movies you want to add to the system.

The DVDRIP program will show the Drive, % Complete and ETA, Encoded name of the movie and Current Status for each DVD drive.

Keep the boxes out so you can enter the movie information when done.

It will take 10 to 15 minutes for the movies to be removed from the disks.

Channel Management 1.04

Movies To Select From:

Pos	Date Loaded	State	Minutes Viewed	Ctgr	Stock Num	Title
328	3/16/2011 ...	Ready	-1		wild_twinks_4-b8a9561	
285	3/15/2011 ...	Proces...	-1		sexy_senoritas_3-a8059	
288	3/15/2011 ...	Ready	-1		my_new_black_stepda	
272	3/15/2011 ...	Ready	-1		MILF GODDESSES 2	
065	3/15/2011 ...	Proces...	-1		FINES MODELS BOL	
253	3/15/2011 ...	Ready	-1		HOT 40+ VOL 19	
136	3/15/2011 ...	Ready	-1		GRANDMA IS AT IT A	
314	3/15/2011 ...	Proces...	-1		obessions-7a75017d	
021	3/15/2011 ...	Ready	-1		russian_slaves_65_rts	
068	3/15/2011 ...	Ready	-1		hectors Filthy Grandm	
254	3/15/2011 ...	Proces...	-1		CHAPPELES SHOW	
158	3/15/2011 ...	Ready	-1		WHITEZILLA SPLIT M	
069	3/15/2011 ...	Ready	-1		dick_play_2-6764b46e	
227	3/15/2011 ...	Ready	-1		cfnm_happy_endings-d	
208	3/15/2011 ...	Ready	-1		love_goes_down47078	
045	3/15/2011 ...	Ready	-1		blind_date-394e5ad7ee	
279	3/15/2011 ...	Proces...	-1		mollys_life_7-e19ed9ab	
327	3/15/2011 ...	Ready	-1		pretty_lied_up-4a5b13e	
137	3/15/2011 ...	Ready	-1		NAUGHTY STAFF	
287	3/15/2011 ...	Ready	-1		BETWEEN THE CHEE	
110	3/15/2011 ...	Ready	-1		vn_caught_on_camera	
278	3/15/2011 ...	Proces...	-1		amateur_revue_fresh_f	
288	3/15/2011 ...	Ready	-1		naughty-12af51669-1	

Channel Assignment:

Chan	Date Added	State	Minutes Viewed	Ctgr	Stock Num	Title
1	3/1/2011 8:...	Viewing	245	Strai...		EXTREME PUBLIC ADVENTURE
2	2/1/2011 1:...	Viewing	82	Strai...		EXTREME NATURALS VOL 2
3	3/1/2011 8:...	Viewing	51	Strai...		CURVACEOUS CUM SWALLOW
4	3/15/2011 ...	Viewing	10	Gay		JOCKS
5	2/15/2011 ...	Viewing	78	Strai...		MILF SHAKE 2
6	3/15/2011 ...	Viewing	3	Gay		COCK OF THE NORTH
7	3/15/2011 ...	Viewing	27	Strai...		DONT TELL MY WIFE I ASSFUC
8	3/8/2011 9:...	Viewing	71	Strai...		HOOTERS CLUB XXX 4
9	3/1/2011 8:...	Viewing	141	Strai...		RACE RELATIONS 2
10	3/15/2011 ...	Viewing	17	Strai...		DIRTY TALKING SLUTS
11	3/15/2011 ...	Viewing	7	Fetish		SWEET VIBRATIONS
12	3/8/2011 9:...	Viewing	64	Strai...		ANAL FRENZY
13	3/15/2011 ...	Viewing	7	Strai...		THIS ISNT UFC ULTIMATE SUC
14	3/15/2011 ...	Viewing	5	Strai...		SWEET TEMPTATIONS
15	3/15/2011 ...	Viewing	12	Tran...		SHEMALES STUNNERS
16	3/15/2011 ...	Viewing	7	Strai...		CRAVING COUGARS
17	3/15/2011 ...	Viewing	25	Strai...		SLUTTY SCHOOL GIRLS
18	3/15/2011 ...	Viewing	546	Strai...		COCK ON MY MIND
19	3/1/2011 8:...	Viewing	72	Strai...		AMATEUR THAI CUTIES 2
20	3/1/2011 8:...	Viewing	68	Leab...		CHARLIE'S ANGEL: CAPRI ANDI
21	3/15/2011 ...	Viewing	8	Strai...		ASSFUCKED SLUTS
22	3/15/2011 ...	Viewing	13	Strai...		STREET HEAT 3
23	3/15/2011 ...	Viewing	1	Strai...		FRESH SQUIFEE 3

Channel Assignment Changes Added:

Pos	Chan	Stock Num	Title
064	4		JOCKS
194	6		COCK OF
316	7		DONT TE
013	10		DIRTY T?
288	11		SWEET V
023	13		THIS ISN
038	14		SWEET T
024	15		SHEMALE
248	16		CRAVING
234	17		SLUTTY :
149	21		ASSFUCK
195	22		STREET
174	23		FRESH S
026	24		MOMS PI
111	25		I FSRIAN

Moved:

From Chan	To Chan	Stock Num	Title
1	18		COCK ON M
4	134		BI CURIOUS
6	75		A WOMANS
7	143		60 SHEMALE

Removed:

Chan	Pos	Stock Num	Title
52	243	101377	Nuttin B
59			HOT 50
70	259		GLORY
73			CUMSHI

# of New Movies: 0      # of Movies To Delete: 0

Auto-Assign New Movies To Channel #'s      Delete Movies

Highlight Movie By Inserting Disk In DVD Drive

Movie Stats

Print: 1-63    1-50    >100    All

Click on the Date Loaded column on the "Movies to Select From" to sort movies by date loaded. As a movie has completed ripping the DVDRIP program will indicate DONE! And the tray will open automatically. The movie will appear at the top of the "Movies to Select From list automatically". Click on the movie and the MovieInfoForm screen will appear.

movieInfoForm

Disk ID: hooters\_club-11a5db93b7bfc5330d63dff26f1af1e4

Shared among stores:      Local To Chain:      Local To Store:

Title: HOOTERS CLUB XXX 4      Stock ID Num.:      Date Loaded In System: 3/1/2011 10:27:46

Series:      Days in viewing lineup: 9.1

Primary Category: Straight      State: Viewing

Secondary Category:      Minutes viewed over the last week: 71

Feature Performer:      Director:      Production Company:      UPC:

In System: 7

Save      Tiled      Full Screen

Chan Up      Chan Down

Stop      Pause

Only Select Movies without Categories assigned

Volume      Seek To      00:00:02  
01:30:10  
Seek: 0      to 6min.

Locate appropriate box and fill in the information you want for the particular title. ie.. Title, Category, stock number, Performer etc.. (note that the dvd will list the encoded disk name which may be adequate) etc..

Use the drop down menus where available.

You can also preview the movie by pressing Tiled or Full screen to get more information.

Press save when finished .

(When done place movies being added in a box so that they are available when you add them to the Marquee the following week.)

Load in additional movies and repeat above until done.

## STEP 2:

While the DVDRIP program is processing the new movies you can assign the movies you loaded last week to active channel numbers.

FIRST: Delete any movies that are tagged as ready to delete. The movies will be listed and the total number displayed in the bottom middle of screen. Press "DELETE MOVIES". Press yes when prompted to confirm you want to delete. After a few minutes (depends on the number being deleted) the SAVE button in bottom right corner will be displayed in RED. Press SAVE.

The screenshot displays the 'Channel Management 1.04' software interface. It is divided into several sections:

- Movies To Select From:** A table listing movies with columns for Pos, Date Loaded, State, Minutes Viewed, Ctgry, Stock Num, and Title. An arrow labeled 'Drag & Drop' points from this table to the Channel Assignment table.
- Channel Assignment:** A table listing assigned movies with columns for Chan, Date Added, State, Minutes Viewed, Ctgry, Stock Num, and Title.
- Channel Assignment Changes:** A section with three sub-tables: 'Added', 'Moved', and 'Removed'. The 'Removed' table has a 'Clear' button circled in red.
- Bottom Panel:** Contains status information: '# of New Movies: 7', '# of Movies To Delete: 3', and buttons for 'Auto-Assign New Movies To Channels', 'Delete Movies', 'Highlight Movie By Inserting Disk In DVD Drive', and 'Movie Stats'. A list of movie titles is shown below the delete count, with a 'Delete Movies' button circled in red.
- Bottom Right:** A 'Save' button circled in red.

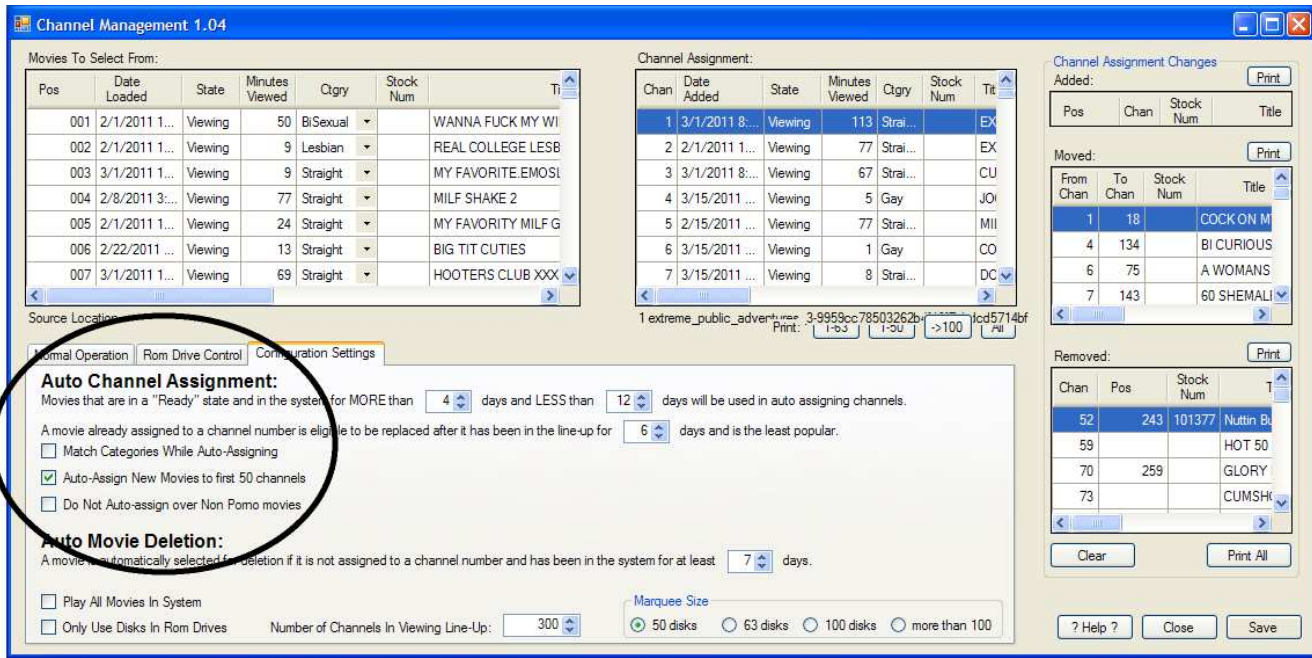
SECOND: Clear the list of Channel assignment changes from previous week by pressing CLEAR (located on right side under Channel Assignment Changes below movies added, moved, removed).

THIRD: The movies that are ready to be assigned to channels are listed as "Ready" status (movies will be sorted by date added from previous step so you may have to scroll down)

You can manually drag those READY movies in the left "MOVIES TO SELECT FROM" window to the specific channel you want to replace in the right window which is labeled "CHANNEL ASSIGNMENT". You can also use the Auto-Assign button to automatically replace the least watched movies in the system.



There are a few configuration options to help make the Auto-Assign button assign the new movies to channels the way you want them to be assigned. These options are adjusted under CONFIGURATION SETTINGS in the Channel management program.



a) Match categories while Auto-Assigning. This is handy if you group all of your straight, gay and she-male etc. movies to certain channel ranges.

b) Auto Assign to first 50 channels (63 or 100 depending on Marquee size) This will allow you to keep the Marquee loaded with newer releases and not just randomly over all your channels (Unless you have a Marquee that matches your total number of movies. Usually there are at least 150 channels in a system with a 50 or 100 channel marquee but can be varied to your desired maximum number of channels.)

c) Option to not Auto Assign over Non Porno movies (check this box if you have non porn movies in your lineup)

FOURTH: After you have either manually or automatically assigned new movies, it's time to change the movies in the Marquee.

Get the box of movies added from the previous week.

PRINT the Channels ADDED from the list on the right hand-side top. Look at MOVED and see where channel 1 was moved too. (Channel 1 always swaps place with another channel). Swap those two movie covers in the marquee.

From the channels added list- REMOVE the channel number box covers that are listed.

Replace with appropriate new movie title from the list. (Before going to marquee put the titles in your box (from previous week) from the MOVIE ADDED list in order- that will speed up the exchange process)

You're done!!! Repeat the same process the next week.

## Kiosk Programs:

The programs necessary for kiosk operation:

- 1.rl\_baservice- controls communication to IO board
- 2.rl\_dvdrip- processes movies
- 3.rl\_kioskcontrol- controls interaction of all booth functions
- 4.rl\_mailer- emails computer system events to corporate headquarters for processing.
- 5.rl\_mirror- keeps files synched between kiosks and ripper computer
- 6.rl\_notifyus- processes relevant system events for mailer
- 7.rl\_playime- processes time movies are watched in each kiosk
- 8.rl\_processtransactions- processes kiosk monetary transactions
- 9.rl\_sound- controls kiosk sound
- 10.rl\_tiledplayer- the main movie processing program
- 11.rl\_tp\_service- controls the kiosk touchpad operation
- 12.rl\_tvservice- controls communication between the kiosk and the booth tv
- 13.rl\_volume- regualtes the kiosk volume

On the ripper computer the following programs are needed:

- 1.dvdrip
- 2.mirror
- 3.mapmovies
- 4.ibuttonreaderconsole
- 5.ethernetconsole
- 6.notifyus
- 7.mailer

Shortcuts on the ripper computer include:

### 1.REPORT GENERATOR

Used to generate system reports

### 2.CHANNELMANAGER

Used to manage dvd channel allocation for kiosks, add, delete movies

### 3.DVDRIP

used for adding movies and for ripping the movies into proper formats(should always be running)

### 4.IBUTTON MANAGEMENT

Used for adding, deleting and assigning Ibutton functions

### 5.ADMIN KIOSK

Used for setting up store parameters – System status, Configuring kiosk rates and time, system information and monitor messages for preview control.

### 6.ARCADE SYSTEM MONITOR AND PREVIEW CONTROL

Used to monitor kiosk status (time remaining, booth alarm status), clearing booth time and starting preview operation

#### Assigning Ibuttons:

Open Ibutton management icon on desktop.

#### 1.Add users:

a. Press add user icon and enter name of user

#### 2.Add Ibutton to user:

a. Highlight user by clicking on line making it blue

b. Press assign Ibutton icon on bottom of screen.

c. touch Ibutton to blue dot reader.

#### 3.Assign functions to users Ibutton

a. check appropriate boxes for ibutton functions:

1. Clear coin

2. Clear BA alarm

3. Clear TV alarm

4. Turn on lights

5. Mute system alarms

6. Deactivate Ibutton

#### 4.Delete Ibutton Permanently:

a. Highlight ibutton to delete

b. Press Delete Ibutton

Preview operation:

Open Arcade system monitor and preview control icon on desktop.

Highlight booth desired for preview operation.

Press “Start Preview” icon in open window.

Status will change to “starting”

Insert movie into blu-ray player.

Direct customer to booth selected.

Customer will have a blue screen in booth directing him to insert money to start preview.

After customer inserts money status will change to “Previewing” .

Clear booth time remaining:

In the event a customer leaves with time remaining in either preview mode or arcade – highlight desired booth and press “clear time”. You will be asked to confirm clearing – press Y.

## Report Generator:

Press Report Generator Icon on desktop.

Select store by using System drop down menu (for multiple stores) Default is the local store.

Set business week start day using drop down menu.

Set Business day start time (local time)

For shift reports – select shift start times

There are two types of reports:

1.shift reports

2.weekly reports

Check the appropriate box to generate desired reports.

Generated reports are listed in the lower window.

Use the drop down box to select:

1.weekly, money inserted

2.weekly, money removed

3.shift, money inserted

4.shift, money removed.

Highlight desired report and press “view” for screen view and print or “print” to print direct without screen view.

(Report generator program only retains data for the current period in which the program is started unless it is kept running)

Income Reports for las\_vegas\_trade 1.04

Run System: las\_vegas\_trade

**Weekly Report Configuration**

Business Week Start Day: Monday

Start Times: (Local Time)

Business Day: 12:00:00 AM

Auto Generate Weekly Reports

**Shift Report Configuration**

Shift Start Times: 1/9/2011 12:03 PM

Shift 1: 6:00:00 AM 1/9/2011 6:00 AM 11:00:00Hours

Shift 2: 5:00:00 PM 1/9/2011 5:00 PM 07:00:00Hours

Shift 3: 12:00:00 AM 1/10/2011 12:00 AM 06:00:00Hours

Auto Generate Shift Reports

Automatically Print Reports

Save Cancel

**Completed Reports**

Select Report Type: Weekly, MoneyInserted (Listed by Reports Beginning Date)

DOW	Shift	Beginning Date_Time	Ending Date_Tim	Income	Custmr Count	PrevInc	PrevCnt	MissingInfo
Mo.	0	12/27/2010	1/3/2011	0	0	0	0	k01k02

View Print

Delete



## Admin Kiosk:

Press the Admin Kiosk Icon on the desktop.

There are five areas:

1. System status
2. Config System
3. Config Kiosks
4. System information
5. System monitor messages

## System Status:

Displays for each kiosk:

- 1.Kiosk number
- 2.Time remaining
- 3.bill acceptor dollars since last clearing
- 4.TV Alarm status
- 5.Bill acceptor alarm status
- 6.Ethernet communication status (on line or off line)
- 7.Kiosk operation status:
  - a. idle
  - b. arcading
  - c. starting (for preview)
  - d. previewing

## Config System:

click on this heading to setup the kiosk operational parameters:

- 1.Number of booths- enter total number of booths
- 2.Number of channels- enter total number of system channels available
- 3.Business Day start time- enter the start time for your business day (hh:mm:ss)
- 4.Business week start day – enter the first day for business week
- 5.Rates:

There are four rate structures (1-4)

For each rate group you can assign the following:

- 1.Description – enter rate structure description eg. Arcade, handicap booth etc.
- 2.\$ Minimum to start – enter the minimum money required to start the kiosk.(100 = 1 dollar)
- 3.Time per dollar Max, Mid and Min are used to adjust the amount of time given when the number of booths in-use reach the Max, Mid and Min number of booths in-use thresholds.
- 4.Incentives can be given for inserting 5,10,20,50 and 100 dollars at one time. Time is added based on number of quarters added.
- 5.Buddy curtain cost- enter cost per minute to be deducted from viewing time for buddy curtain operation.
- 6.Coupon value – enter value for store coupons – check box to enable coupons for each rate structure.
- 7.Coin value- enter value for coins
- 8.Preview settings:

Enter Min start for Previews

Enter time allocated for min start

enter the amount of time given for each dollar added over min start.

System Admin las\_vegas\_trade 1.02

Run System: las\_vegas\_trade

System Status | **Config System** | Config Kiosks | System Info | System Monitor Messages

Number of Booths:

Number of Channels:

Business Day Start Time: (hh:mm:ss)  Business Week Start Day:

**Rates**  
Click on each Rate Group to check and adjust its' values

RateStruct1

Description:	<input type="text"/>	
\$ Minimum to Start:	<input type="text" value="500"/>	(in pennies)
Time Per Dollar Max:	<input type="text" value="180"/>	Booths in-use for T_Max: <input type="text" value="0"/>
Time Per Dollar Mid:	<input type="text" value="170"/>	Booths in-use for T_Mid: <input type="text" value="7"/>
Time Per Dollar Min:	<input type="text" value="160"/>	Booths in-use for T_Min: <input type="text" value="10"/>
Incentive for \$5:	<input type="text" value="1"/>	additional quarters (\$0.25) of time added to dollars remaining
Incentive for \$10:	<input type="text" value="3"/>	
Incentive for \$20:	<input type="text" value="7"/>	
Incentive for \$50:	<input type="text" value="20"/>	
Incentive for \$100:	<input type="text" value="45"/>	
Buddy Curtain Cost:	<input type="text" value="1"/>	cost(in pennies)/minute ie: entering a ten means 10cents/minute
Coupon Value:	<input type="text" value="180"/>	(in pennies) <input type="checkbox"/> Enable Accepting Coupons
Coin Value:	<input type="text" value="25"/>	(in pennies)

**Preview Settings**

Min Start:  Min Start Time:  Time For Additional Dollars:   
(in pennies) (in minutes) (in seconds)

## Config Kiosks:

For each Kiosk enter Description (if necessary) Check USBTV for preview booths only.  
Select Free Play for kiosks that will run continuously without money entered.  
Select appropriate rate structure for each kiosk (set up on previous page)

Run    System: las\_vegas\_trade

System Status   Config System   **Config Kiosks**   System Info   System Monitor Messages

Save Changes

	Number	Description	UsbTV	FreePlay	Rates
▶	1	-	<input type="checkbox"/>	<input type="checkbox"/>	RateStruct1 ▾
	2	-	<input type="checkbox"/>	<input type="checkbox"/>	RateStruct1 ▾
	3	-	<input type="checkbox"/>	<input type="checkbox"/>	RateStruct1 ▾
	4	-	<input type="checkbox"/>	<input type="checkbox"/>	RateStruct1 ▾
	5	-	<input type="checkbox"/>	<input type="checkbox"/>	RateStruct1 ▾
	6	-	<input type="checkbox"/>	<input type="checkbox"/>	RateStruct1 ▾
	7	-	<input type="checkbox"/>	<input type="checkbox"/>	RateStruct1 ▾
	8	-	<input type="checkbox"/>	<input type="checkbox"/>	RateStruct1 ▾
	9	-	<input type="checkbox"/>	<input type="checkbox"/>	RateStruct1 ▾
	10	-	<input type="checkbox"/>	<input type="checkbox"/>	RateStruct1 ▾
	11	-	<input type="checkbox"/>	<input type="checkbox"/>	RateStruct1 ▾
	12	-	<input type="checkbox"/>	<input type="checkbox"/>	RateStruct1 ▾
	13	-	<input type="checkbox"/>	<input type="checkbox"/>	RateStruct1 ▾
	14	-	<input type="checkbox"/>	<input type="checkbox"/>	RateStruct1 ▾
	15	-	<input type="checkbox"/>	<input type="checkbox"/>	RateStruct1 ▾
	16	-	<input type="checkbox"/>	<input type="checkbox"/>	RateStruct1 ▾
	17	-	<input type="checkbox"/>	<input type="checkbox"/>	RateStruct1 ▾
	18	-	<input type="checkbox"/>	<input type="checkbox"/>	RateStruct1 ▾
	19	-	<input type="checkbox"/>	<input type="checkbox"/>	RateStruct1 ▾
	20	-	<input type="checkbox"/>	<input type="checkbox"/>	RateStruct1 ▾
	21	-	<input type="checkbox"/>	<input type="checkbox"/>	RateStruct1 ▾
	22	-	<input type="checkbox"/>	<input type="checkbox"/>	RateStruct1 ▾

## System Information:

Enter Store Name, address, city, state, zip

Enter Account Id

Enter Manager name and phone number

Notes Area can be used for information such as key numbers et.

System Admin las\_vegas\_trade 1.02

Run    System: las\_vegas\_trade

System Status   Config System   Config Kiosks   **System Info**   System Monitor Messages

Store Name: ..name..

Address: ..address1..

Address2: ..address2..

City: ..city..

State: ..state..

Zip Code: ..zip code..

Acct ID: ..act id..

Manager: ..manager..

Phone Number: ..phone number..

Notes: ..notes..

Save Changes

## System Monitor Messages:

The dialog located on the Arcade system monitor and preview control is entered here.

The screenshot shows a window titled "System Admin las\_vegas\_trade 1.02". At the top left, there is a checked checkbox labeled "Run" and a dropdown menu for "System:" set to "las\_vegas\_trade". Below this is a tabbed interface with five tabs: "System Status", "Config System", "Config Kiosks", "System Info", and "System Monitor Messages". The "System Monitor Messages" tab is active. In the top right corner of the main area, there is a "Save Changes" button. The main area contains five message configuration boxes, each with a label and a text input field:

- Message 1:** To Start a preview session  
Insert a disk into the player  
Click on a booths line and click Start Preview
- Message 2:** Only Booths 1 and 2 can preview movies!!
- Message 3:** All movies can be played in Booths 1 and 2  
including Blu-Ray disks
- Message 3:** It may take a minute for the Blu-Ray player to start-up  
and start playing the movie. During this time the  
Pioneer logo will be on the screen in the booth
- Message 3:** The Customer has full control of the movie.  
The touchPad works like the players' remote control.  
Press the center dot on the touchPad to start the movie.

At the bottom left, there is a checkbox labeled "Hide Start Preview Button" which is currently unchecked.